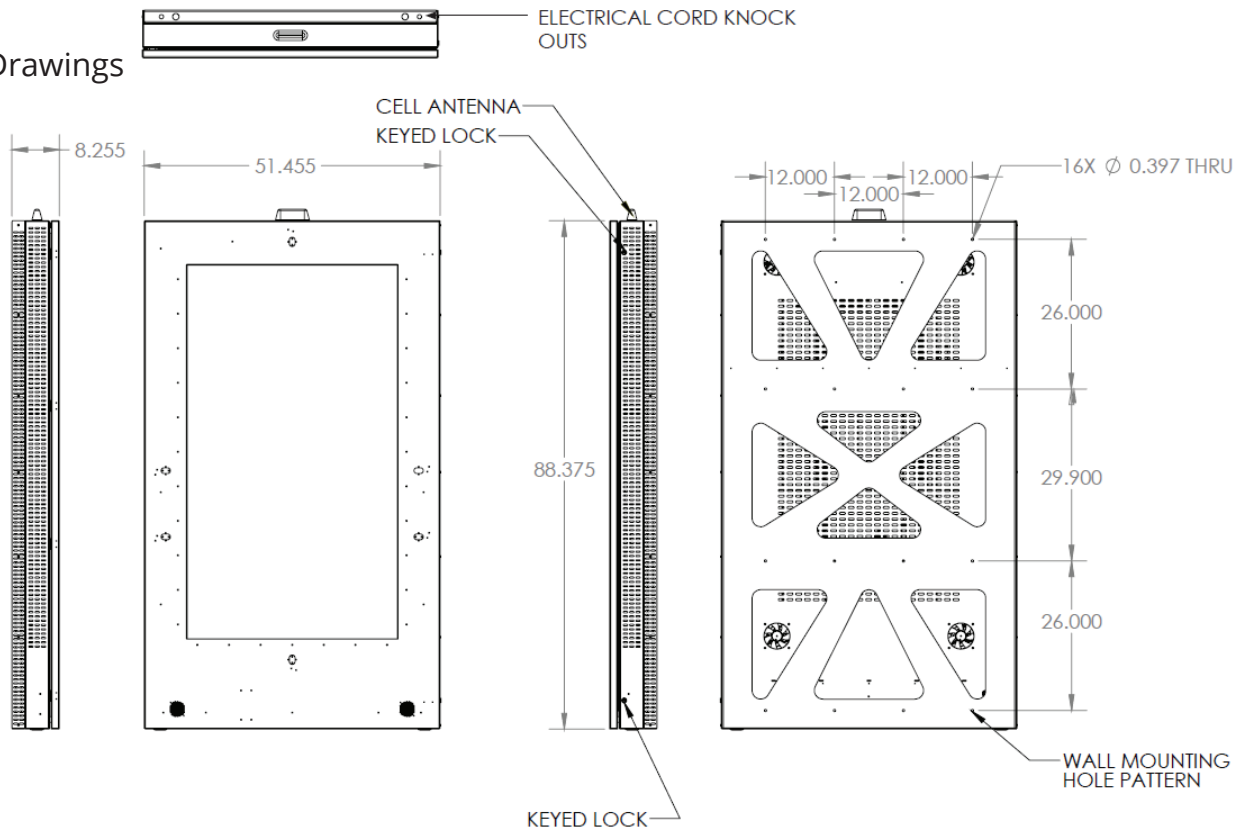


Indoor Wall Mount Installation

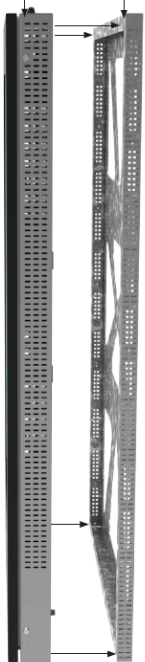
MERIDIAN

Indoor Wall Mount Installation Guide

Dimension Drawings



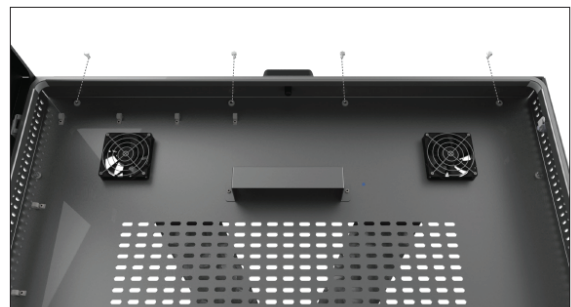
Main Body Wall Mount Bracket



Step 1:

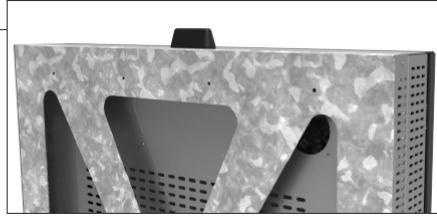
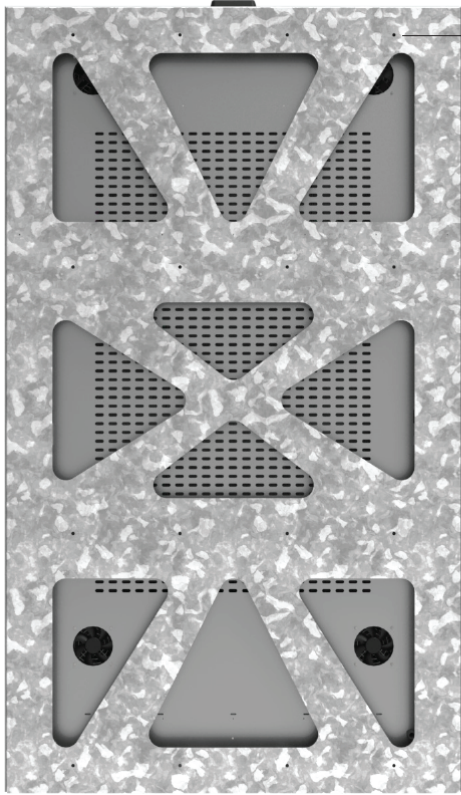
Separate the main body from the galvanized wall mount bracket by removing the 5/16" hex bolts used to attach the two parts

There are 18 total hex bolts around the edge of the main body



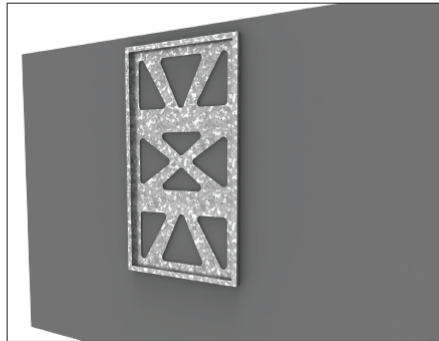
MERIDIAN

Indoor Wall Mount Installation Guide



Step 2: Mount the galvanized wall bracket to the wall

There are 16 .4" diameter holes on the galvanized wall mount bracket to be used in attaching it to the wall, with client supplied wall anchoring hardware



Step 3:

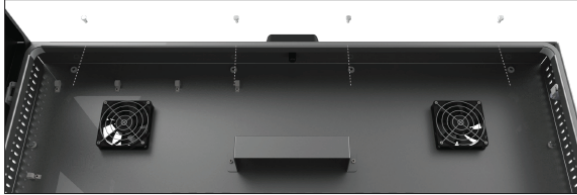
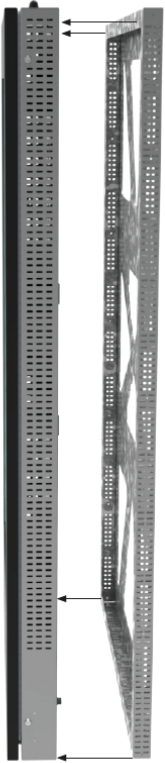
Select the desired location for routing electrical wires

Knock out the desired location on either side of the galvanized wall bracket on the top or bottom



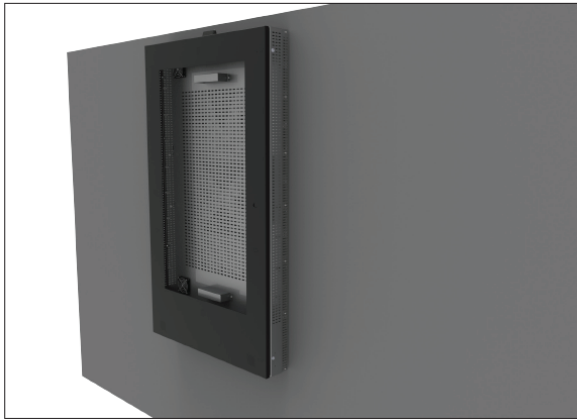
MERIDIAN

Indoor Wall Mount Installation Guide



Step 4: Install the main body to the galvanized wall mount bracket by bolting the 5/16" hex bolts used to attach the two parts

There are 18 total hex bolts



Step 5: Install the monitor mounting bracket to the chassis

M8 screws included

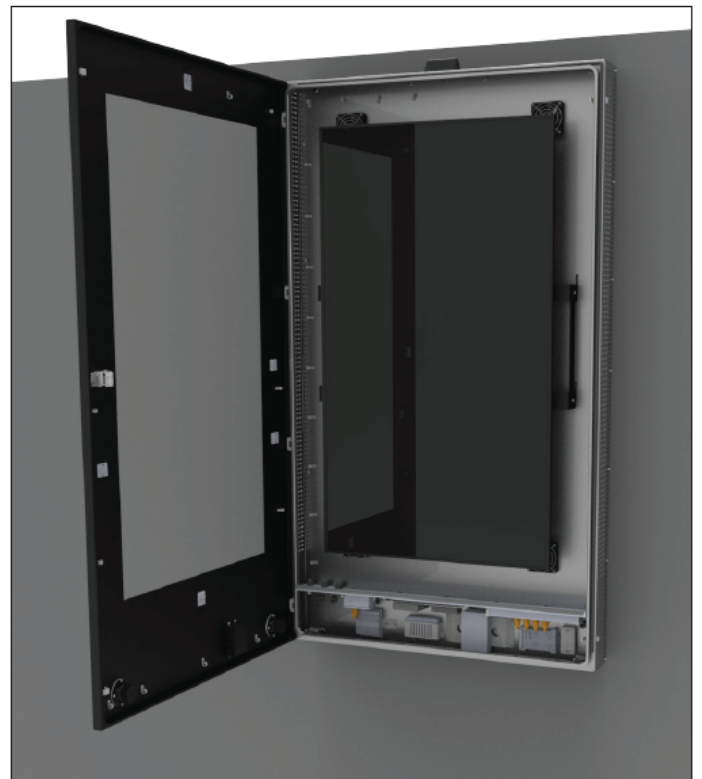


MERIDIAN

Indoor Wall Mount Installation Guide

Step 6: Install the monitor to the mounting bracket

Connect power and hdmi cables as you install the monitor



Corporate Headquarters

312 S. Pine Street,
Aberdeen, NC 28315

+1 910-944-1751 Ext. 2
Help@mzero.com

Meridiankiosks.com

